

1. INTRODUCTION

The document contains instructions on running PAVLOU SalesTaxPRO® in Windows 7 using the Windows XP compatibility mode.

PAVLOU SalesTaxPRO® has not yet been updated to run natively in Windows 7. However it does run in Windows 7 using the **Windows XP (Service Pack 3)** compatibility mode.

2. ICONS

PAVLOU SalesTaxPRO® uses similar icons on the desktop for the installation file and the program shortcut. Also, the installation program icon appears differently in Windows XP and Windows 7. The icons are shown below.

Installation File Icon Windows 7	Installation File Icon Windows XP	Shortcut Icon Windows 7 and Windows XP
		

3. INSTALLATION

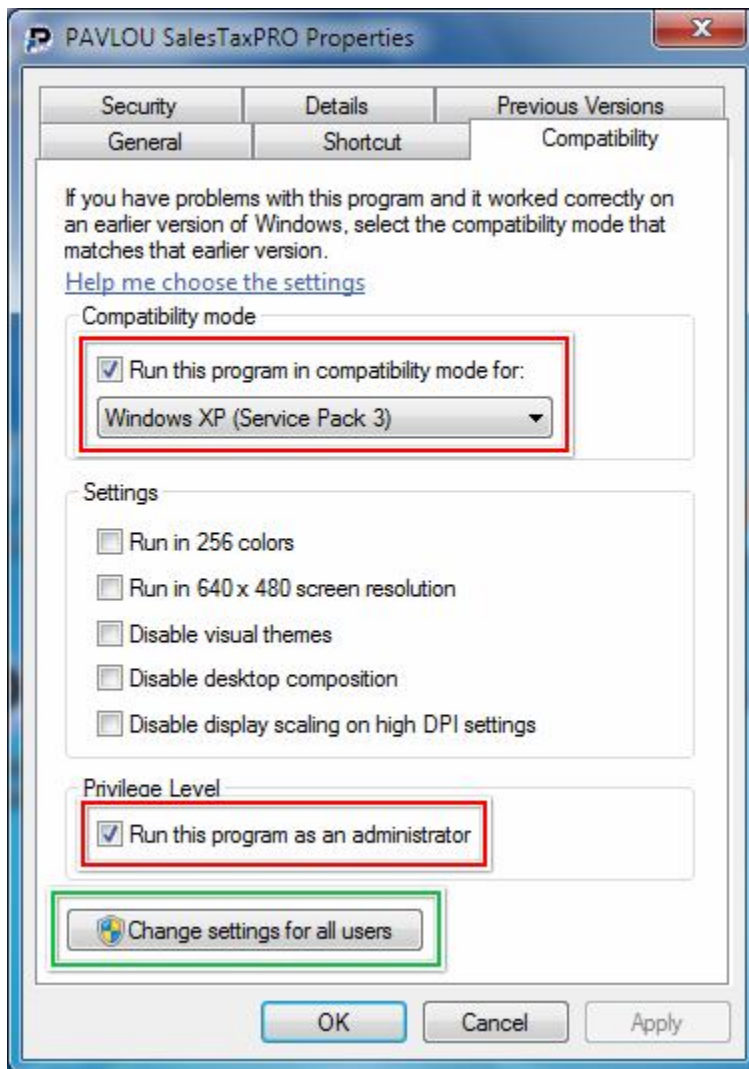
The PAVLOU SalesTaxPRO® installation process is the same for Windows 7 as it was for Windows XP. For detailed installation instructions, please see the PAVLOU SalesTaxPRO® User Guide.

Note: For both Windows XP and Windows 7, the user that is logged in and performing the installation **must** have Administrator privileges on that computer.

4. SETTING COMPATIBILITY

Once the installation is completed successfully there will be a PAVLOU SalesTaxPRO® shortcut icon on the desktop. To set the compatibility mode, please follow the steps below.

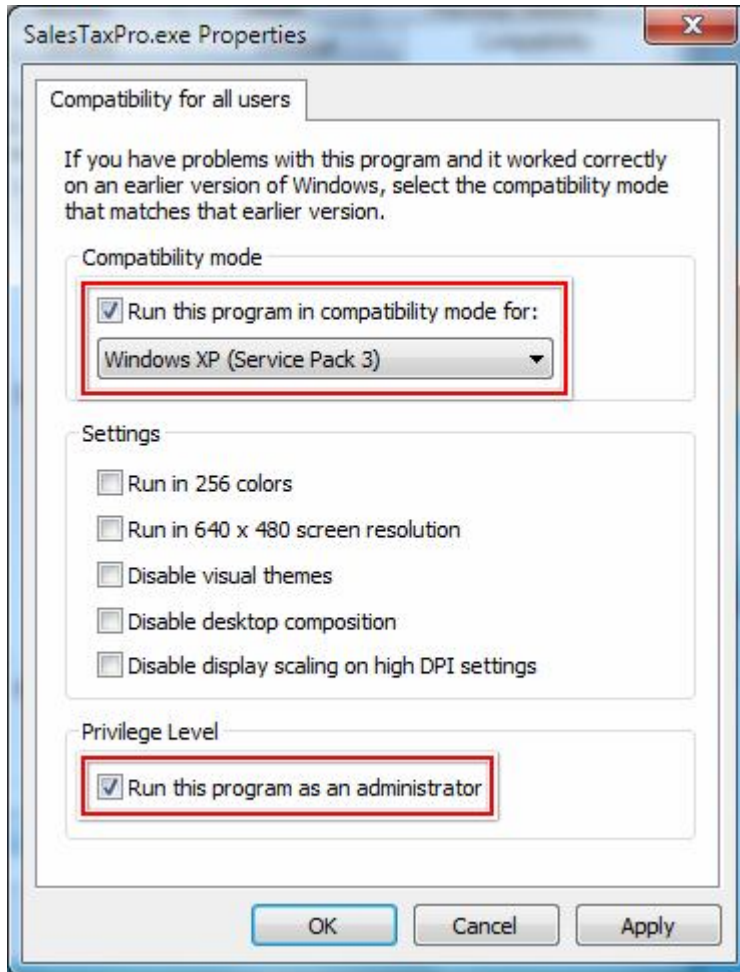
1. Right-click on the PAVLOU SalesTaxPRO® shortcut icon and select **Properties**.
2. Once Windows 7 displays the **Properties** window, select the **Compatibility** tab as shown in the image below.



3. The areas outlined in red are the ones that have been changed. Update the properties on your screen to match the image above.
4. If you would like to set the same compatibility options for all the users on your computer, click the **Change settings for all users** button (outlined in green).

Otherwise, click the **OK** button to exit the **Properties** window and complete the process.

5. If you clicked the **Change settings for all users** button, Windows 7 will display the following window.



6. The areas outlined in red are the ones that have been changed. Update the settings on your screen to match the image above.
7. Click the **OK** button to exit the **Properties** window and complete the process.

5. OPERATION

To run PAVLOU SalesTaxPRO®, double-click the shortcut icon on the desktop. For more information on using PAVLOU SalesTaxPRO®, please see the PAVLOU SalesTaxPRO® User Guide.